

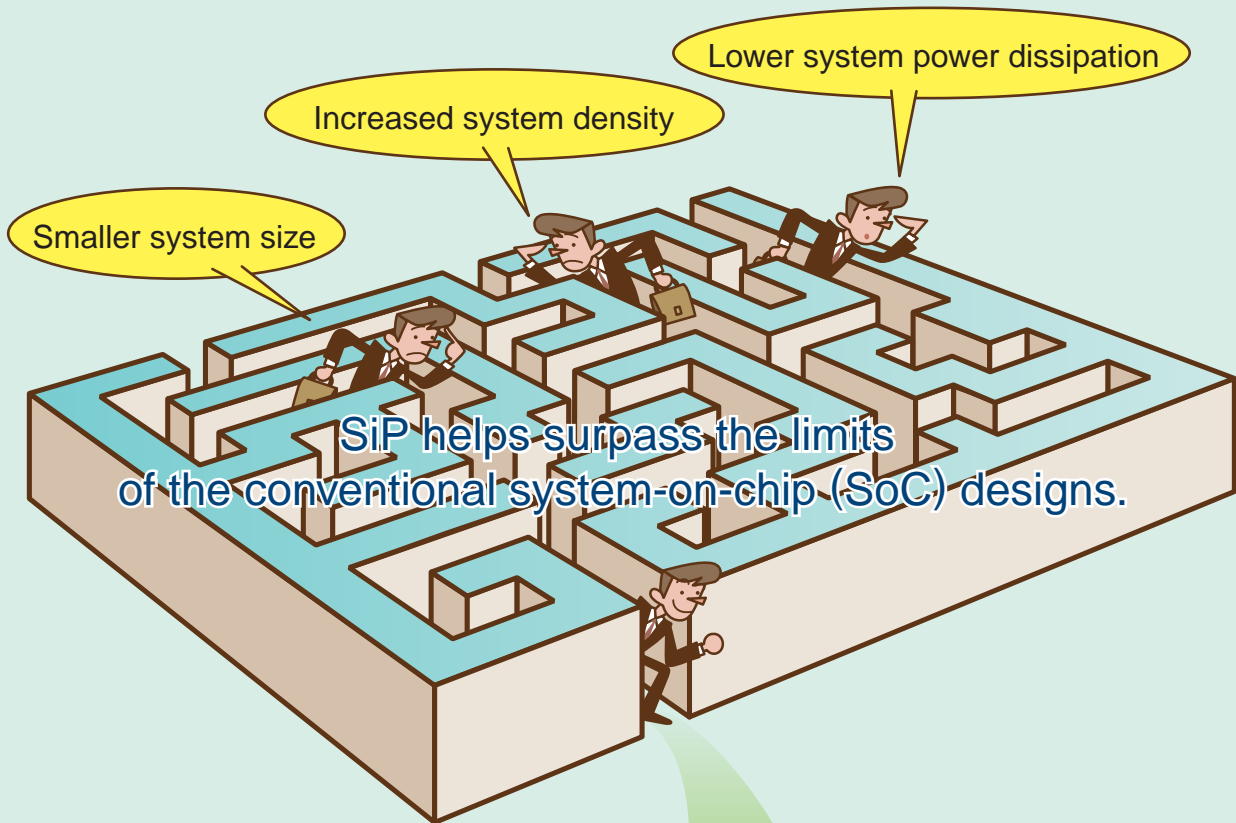
TOSHIBA

SYSTEM CATALOG

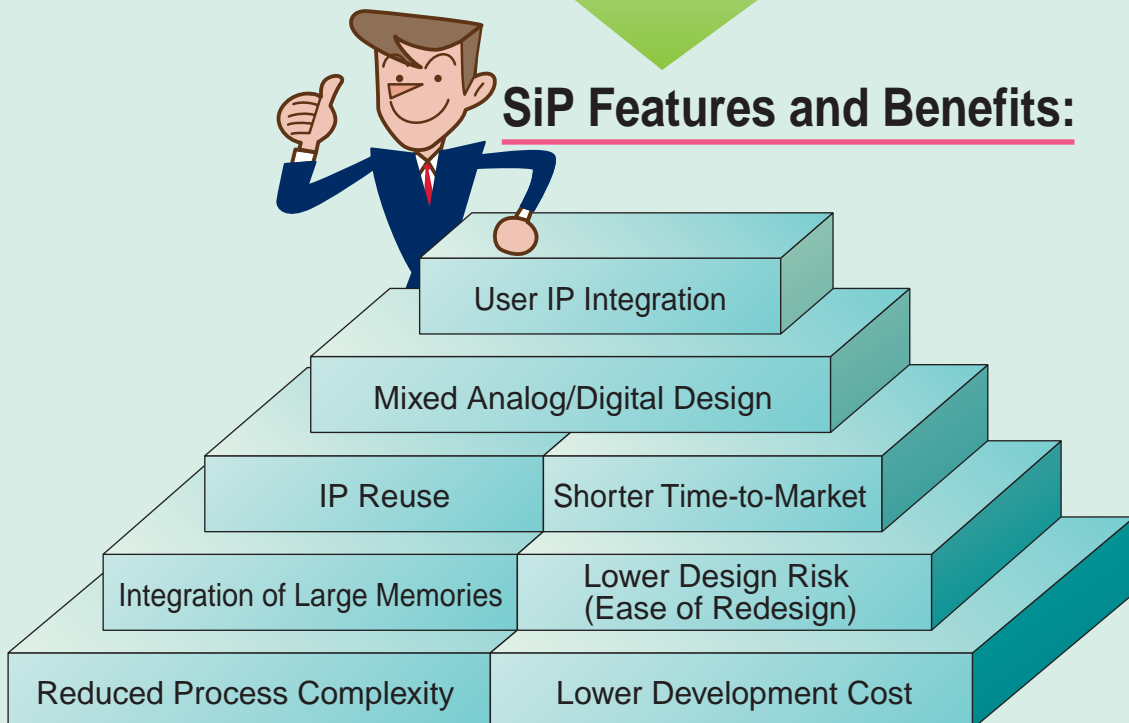
SiP (System in Package)

2004 semiconductor
<http://www.semicon.toshiba.co.jp/eng>

SiP provides a solution to system design challenges.

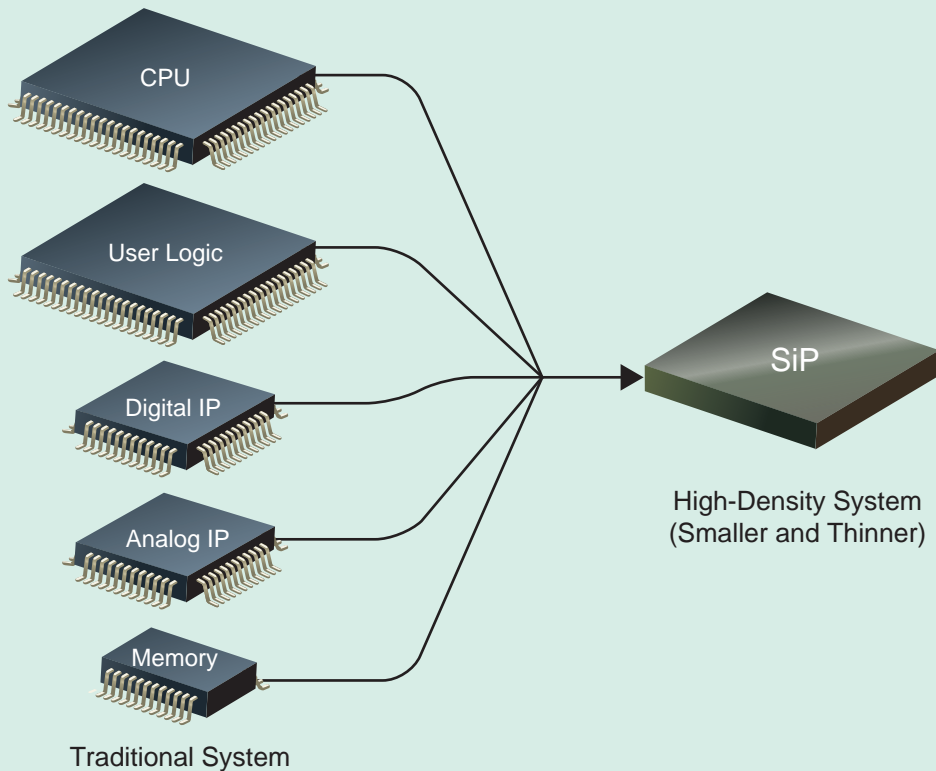


SiP Features and Benefits:



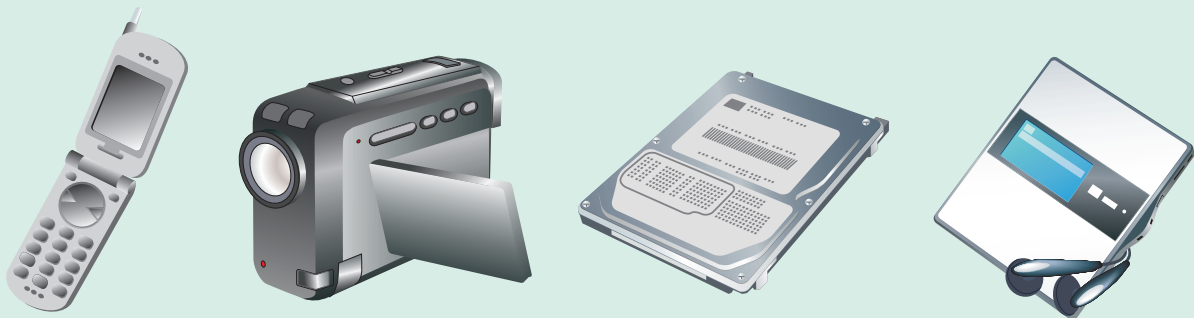
What is System-in-Package (SiP)?

SiP is an advanced technology to incorporate multiple components into a single package. You can mix a variety of components such as CPU, logic, analog and memory functions, reducing overall system size.



Market Needs for SiP

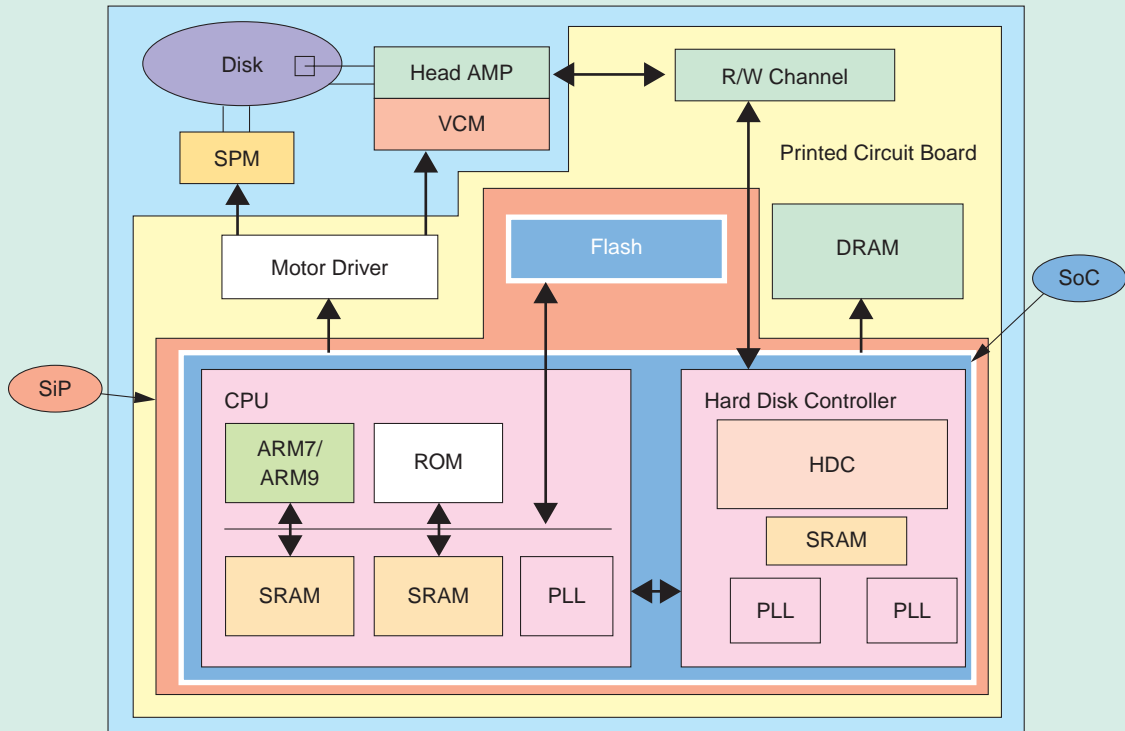
1. Reducing system board space
 2. Reducing board mounted height
- The evolution of mobile electronic devices such as cell phones, digital cameras, digital camcorders and portable audio players is driving the demand for SiP solutions.



System Block Diagram Examples

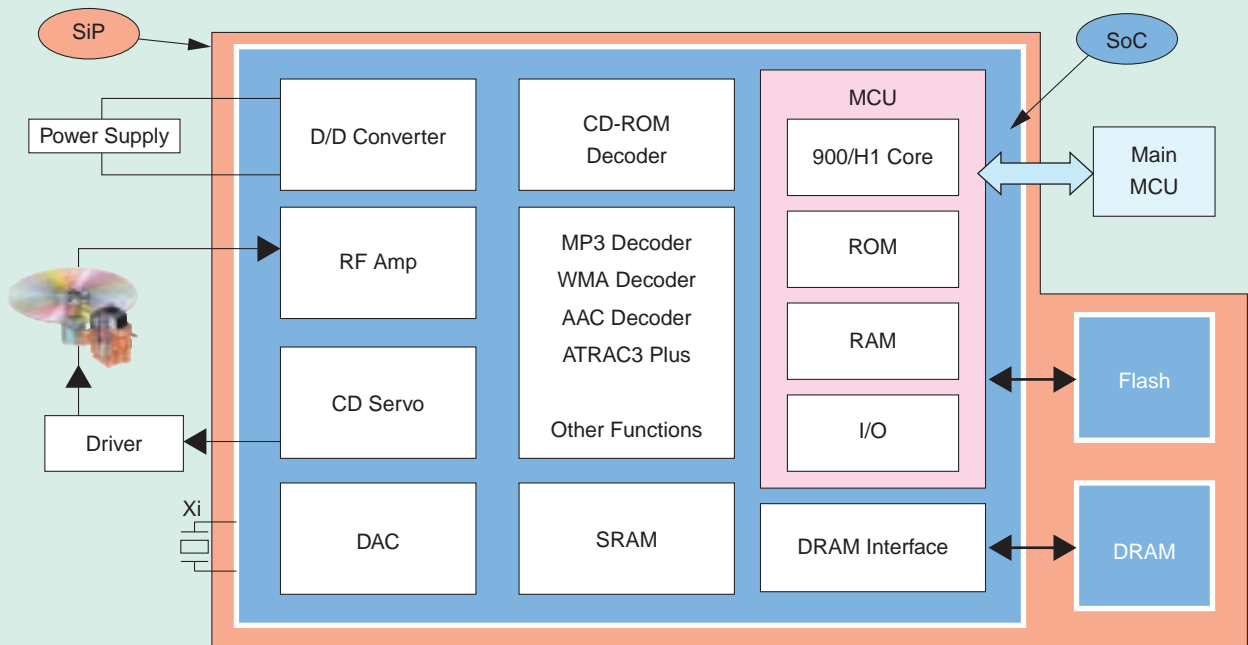
1. Ultra-Thin Hard Disk Drive

2-Chip SiP (SoC + Flash)



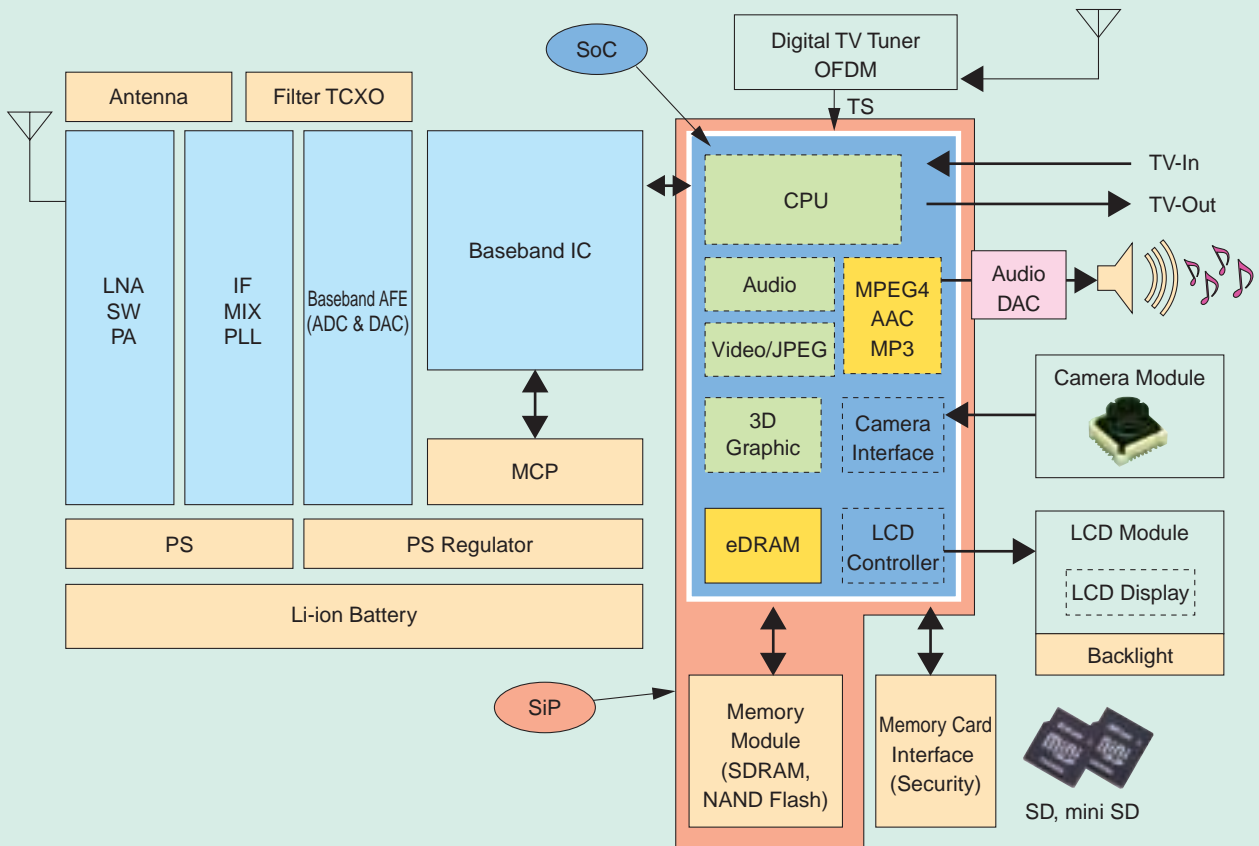
2. CD/MP3 Player

3-Chip SiP (SoC + Flash + DRAM)

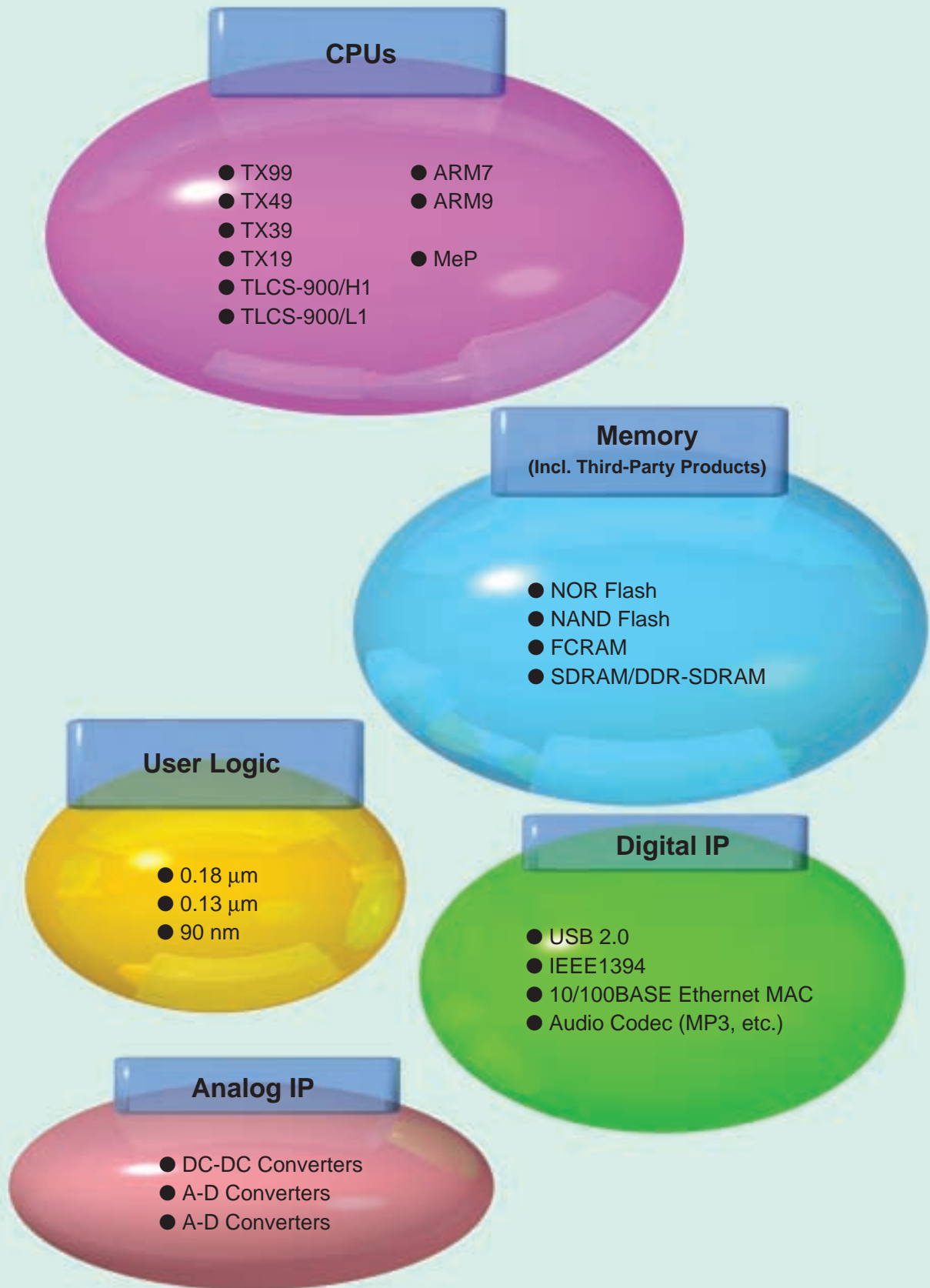


3. Cell Phone

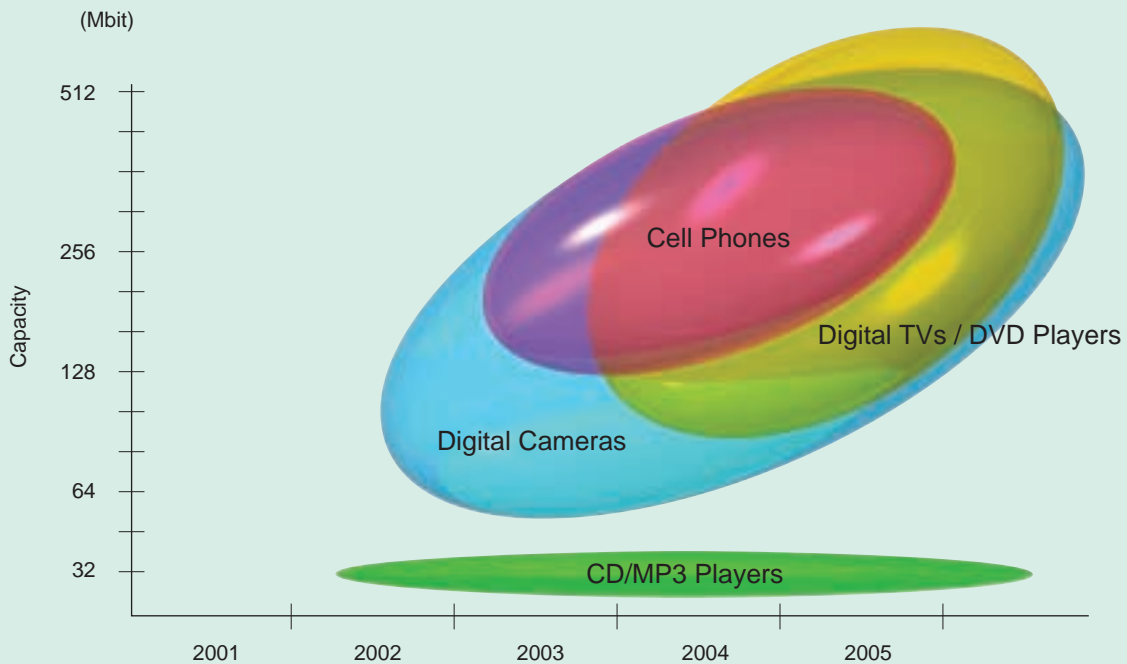
3-Chip SiP (SoC + SDRAM + NAND Flash)



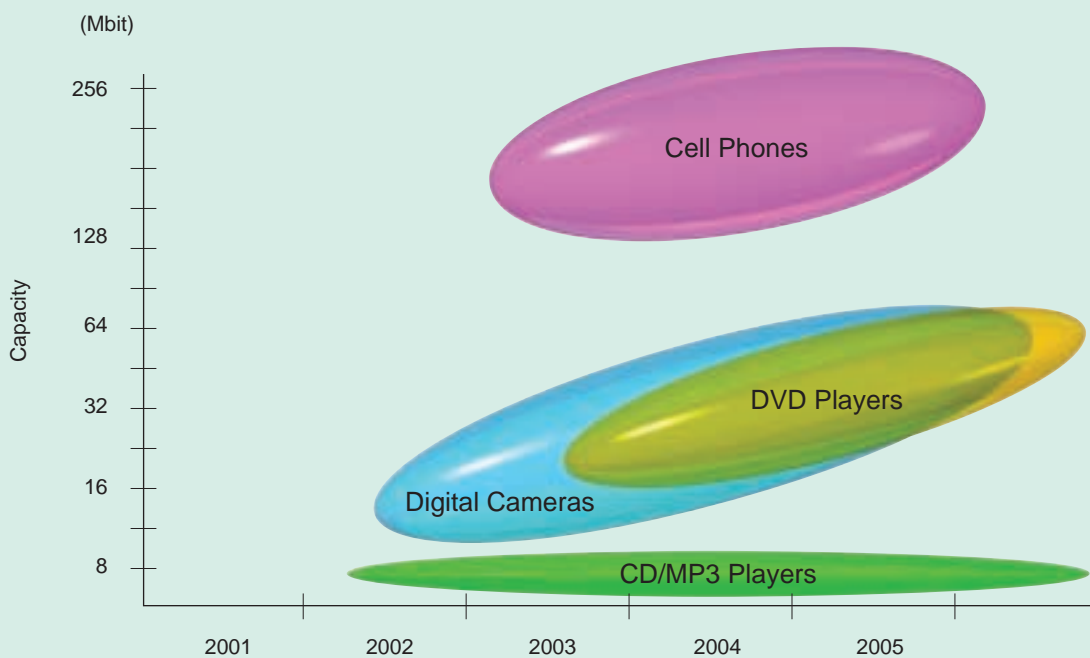
MP3: MPEG Audio Layer 3. Audio compression standard developed by the Motion Picture Experts Group (MPEG), a working group in the International Standards Organization (ISO).
 WMA: Windows Media Audio. Proprietary compressed audio file format used by Microsoft Corp. Features a high compression ratio and high-quality sound close to CD.
 ACC: MPEG-2/Advanced Audio Coding. International audio compression standard developed by the MPEG group.
 ATRAC3 Plus: Adaptive TRansform Acoustic Coding 3 Plus. Audio compression algorithm developed by Sony Corp.



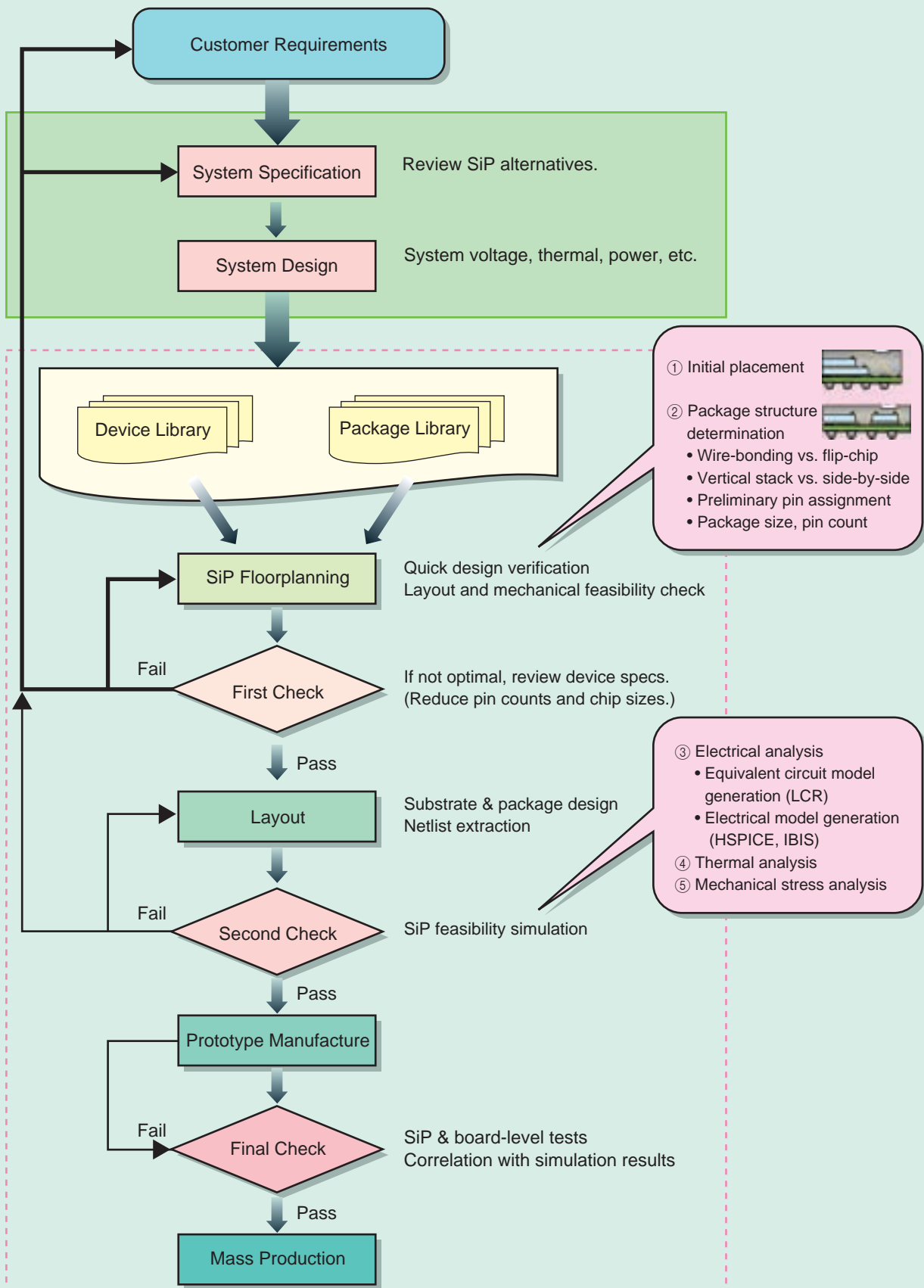
SDRAM



Flash

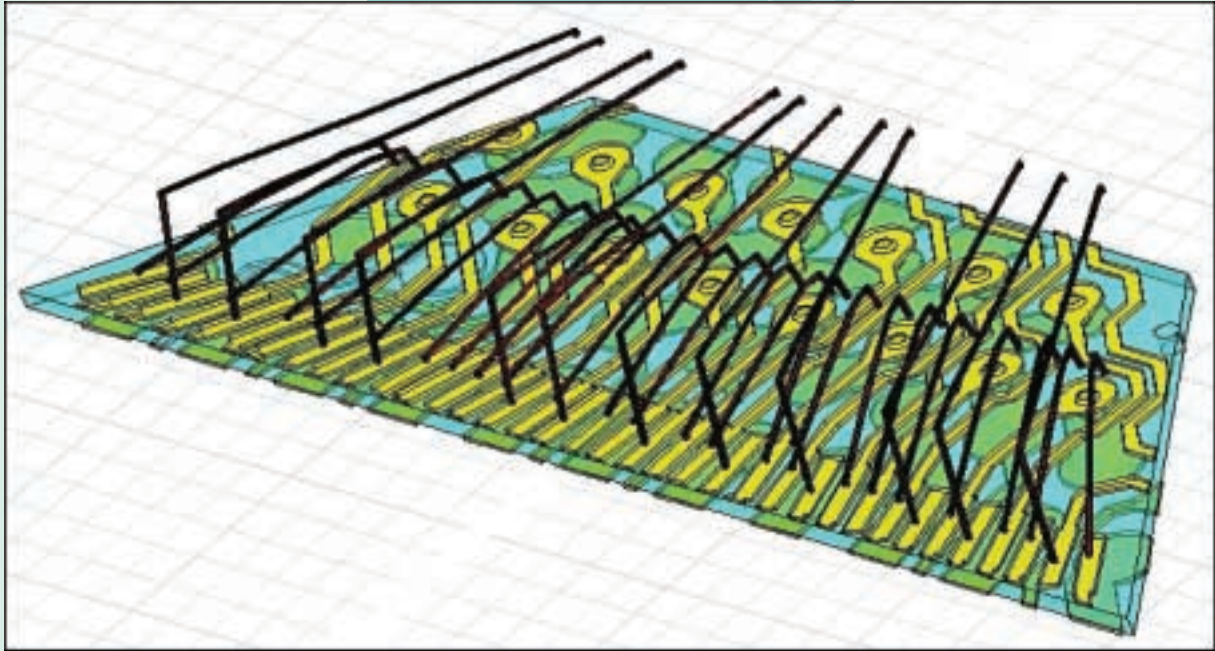


SiP Development Flow



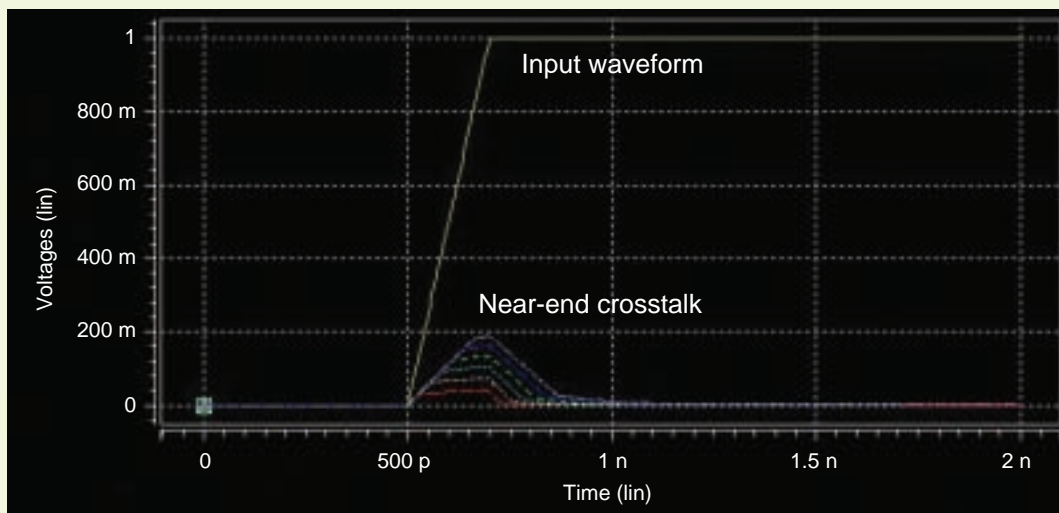
If you are concerned about electrical noise,

Toshiba offers 3-D electrical modeling services.



3D Electrical Model Example

Near-End Crosstalk Noise

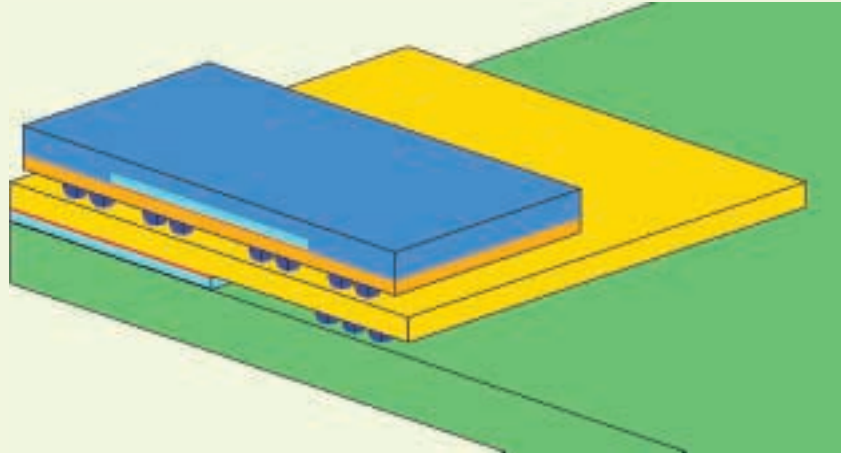


Tr (Edge Rate) = 200 ps

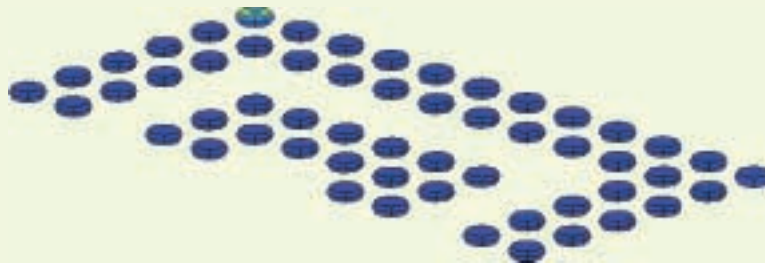
To assist you with analysis of signal integrity problems such as crosstalk, Toshiba offers RLC extraction and HSPICE/IBIS modeling for electrical simulation.

If you are concerned about the solder interconnect reliability,

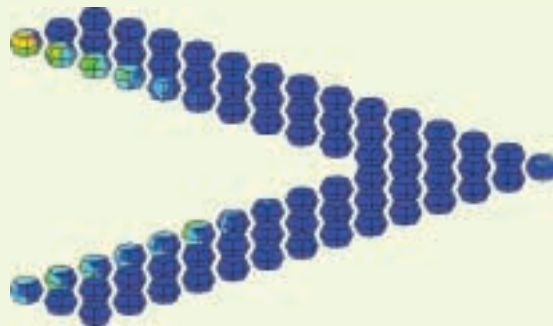
Toshiba offers 3-D solder stress analysis services.



SiP Stress Analysis Model



Solder Bump Strains in the Upper BGA

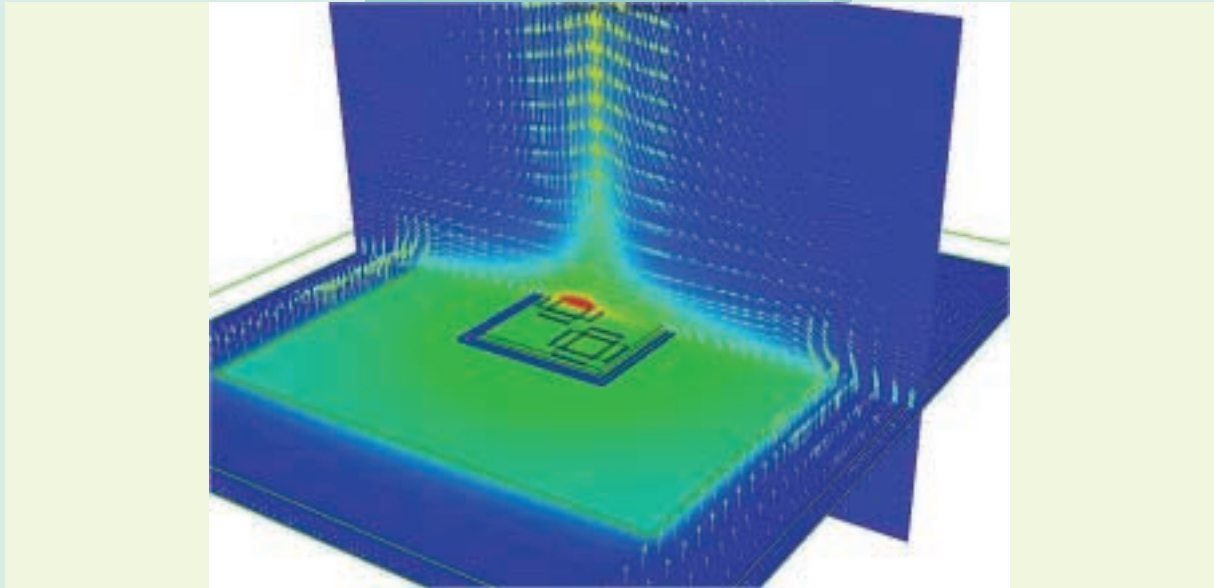


Solder Ball Strains in the Lower BGA

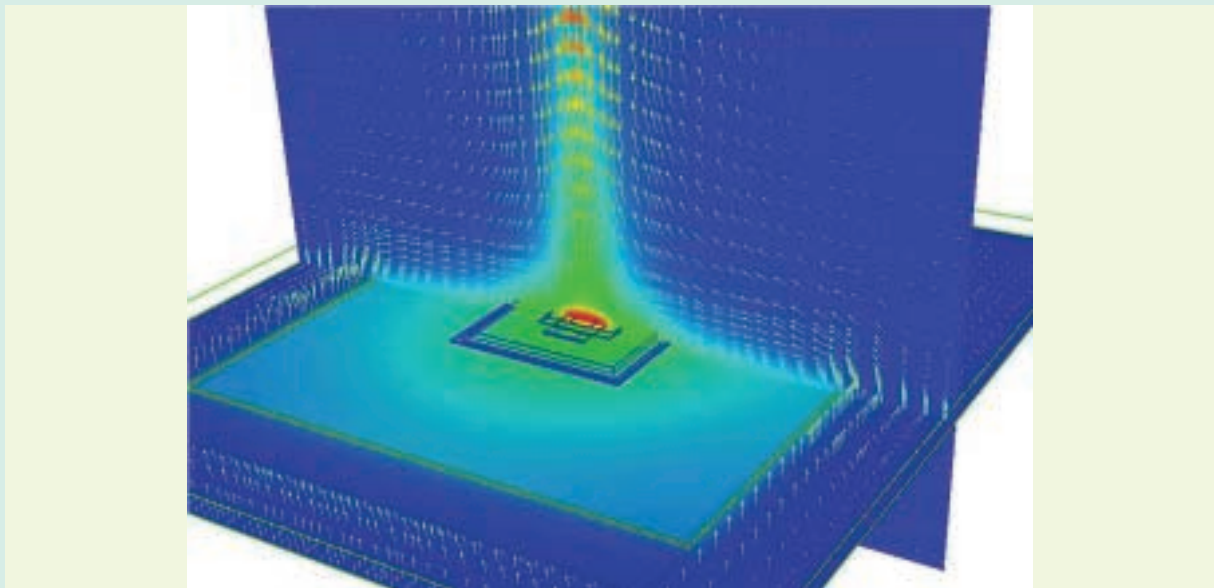
Toshiba provides support for measuring stress-induced strains in solder joints. Thermo-mechanical deformations of solder joints can be used for lifetime prediction, with the objective of studying solder joint reliability.

If you are concerned about thermal issues,

Toshiba offers 3-D thermal analysis services.



Thermal Flow for a Side-by-Side SiP (Free Air)

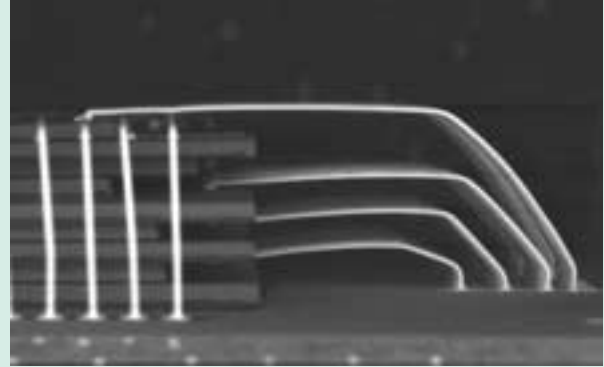
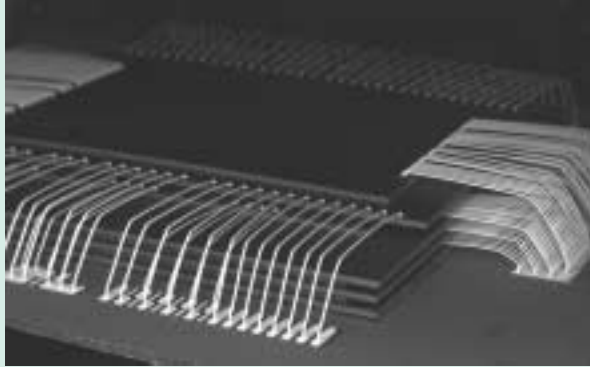


Thermal Flow for a Stacked SiP (Free Air)

Toshiba provides a solution for reducing the package's thermal impedance, based the package structure, chip size and substrate specifications. (θ_{JA} , θ_{JMA} , θ_{JC} and θ_{JB} can be calculated.)

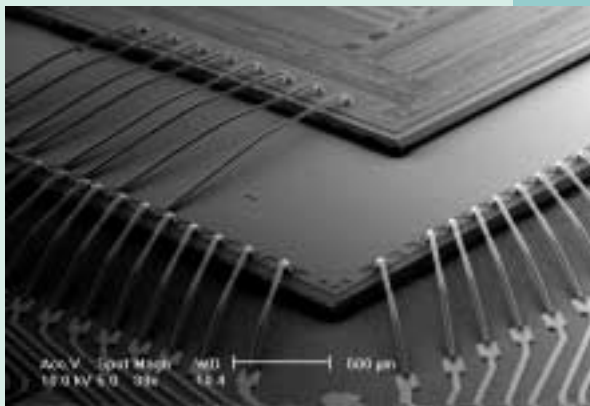
For space-constrained applications...

9-Layer MCP. (5 Die Stacked Die)



Toshiba's SiP solution fully leverages its advanced die backgrinding technology to allow up to 9 die stack.

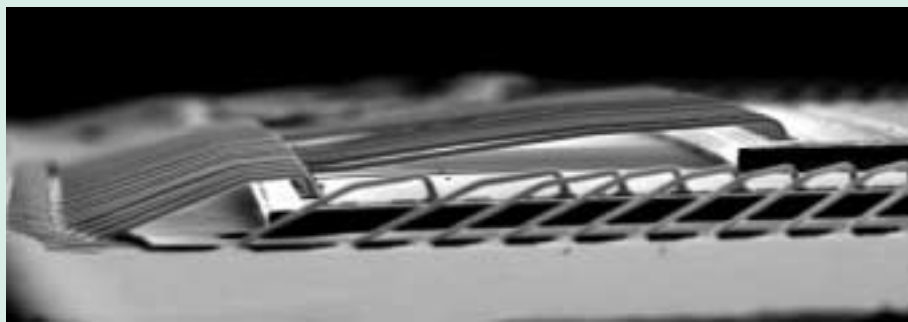
For height-constrained applications...



Ultra-Thin Stacked SiP
Chip thickness: 60 μm



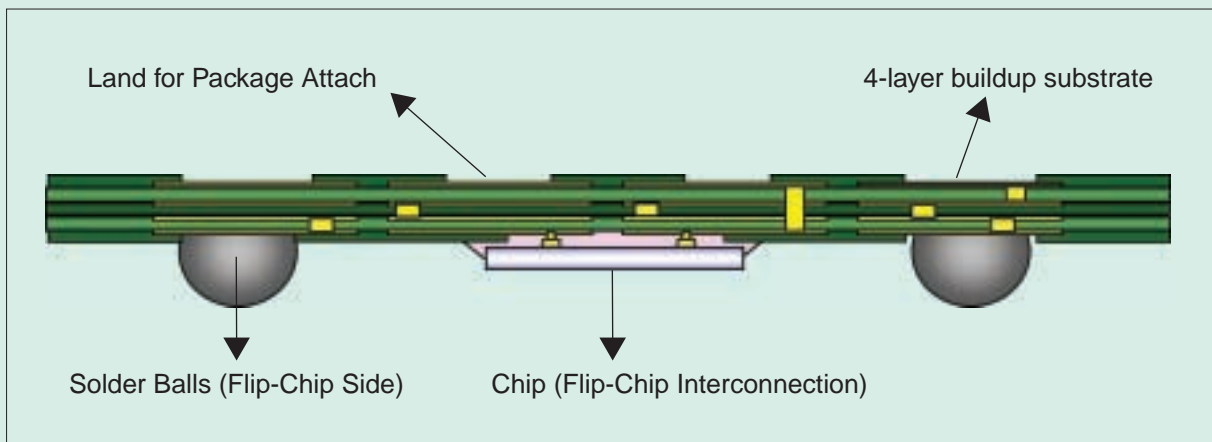
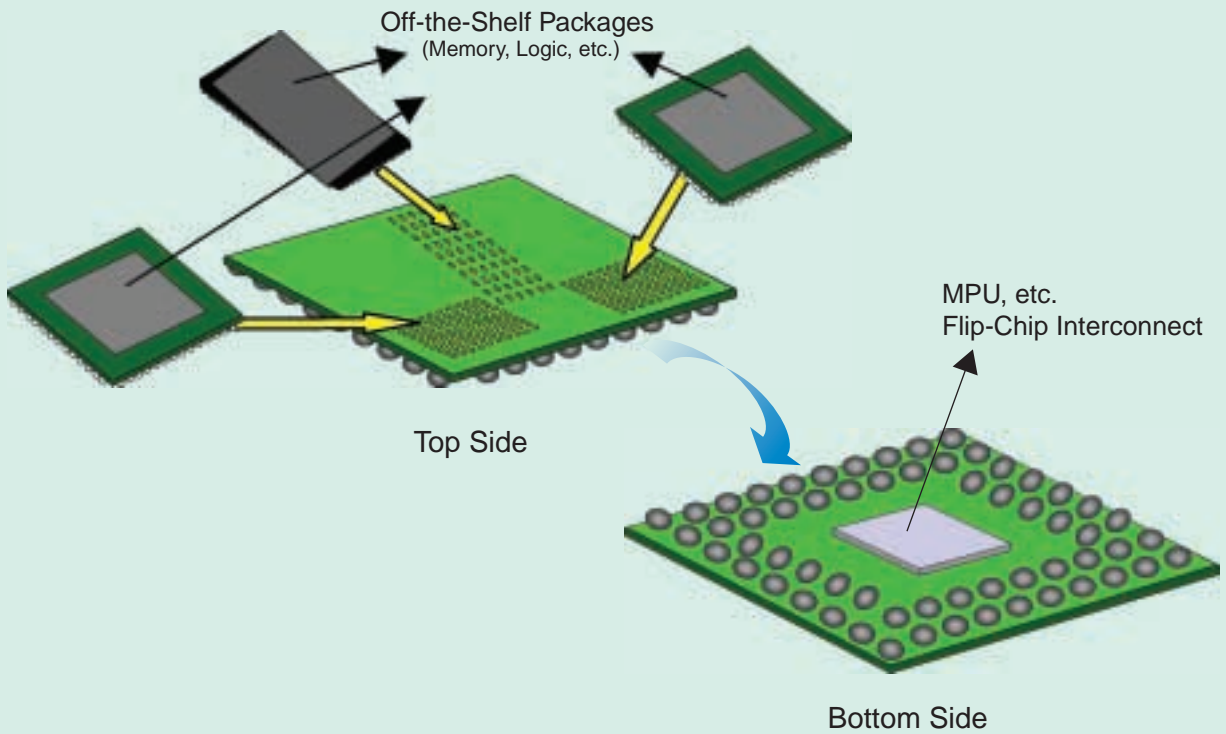
2-Layer Stacked SiP: Max.
Thickness = 0.55 mm



Low Loop Wire Bonding

Using off-the-shelf packages in package stacking...

Package-on-Package Stacking



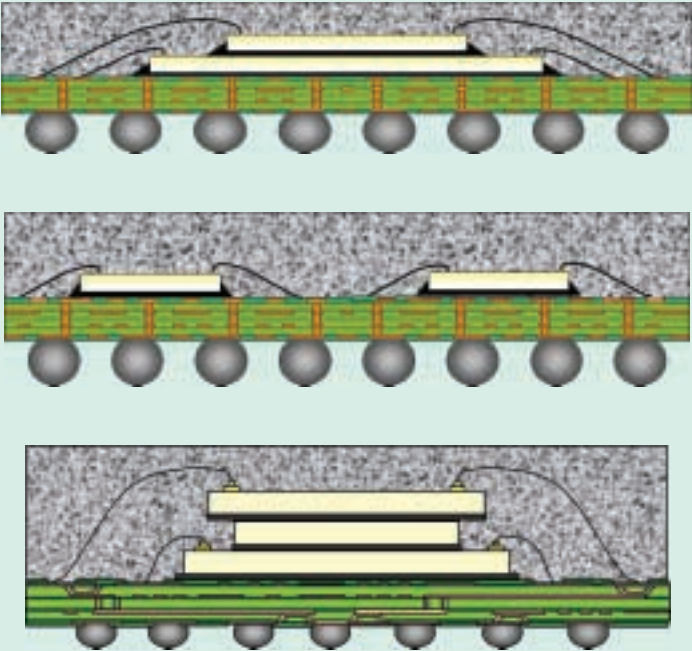
Toshiba provides package-on-package stacking solutions. This approach helps to combine off-the-shelf packages on top of a logic chip that constitutes a major part of your system.



Package Types

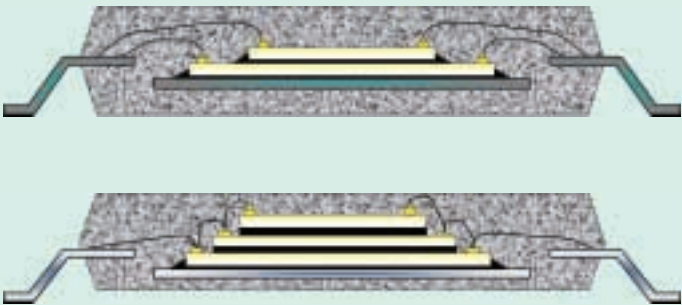
Laminate Packages

FBGA (Fine Pitch Ball Grid Array)
PBGA (Plastic Ball Grid Array)

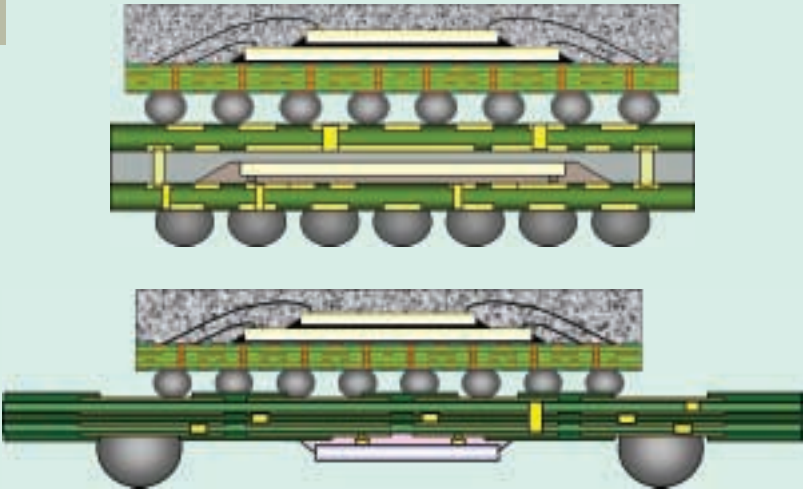


Leadframe Packages

QFP (Quad Flat Packages)
LQFP (Low-Profile Quad Flat Packages)
TSOP (Thin Small Outline Packages)

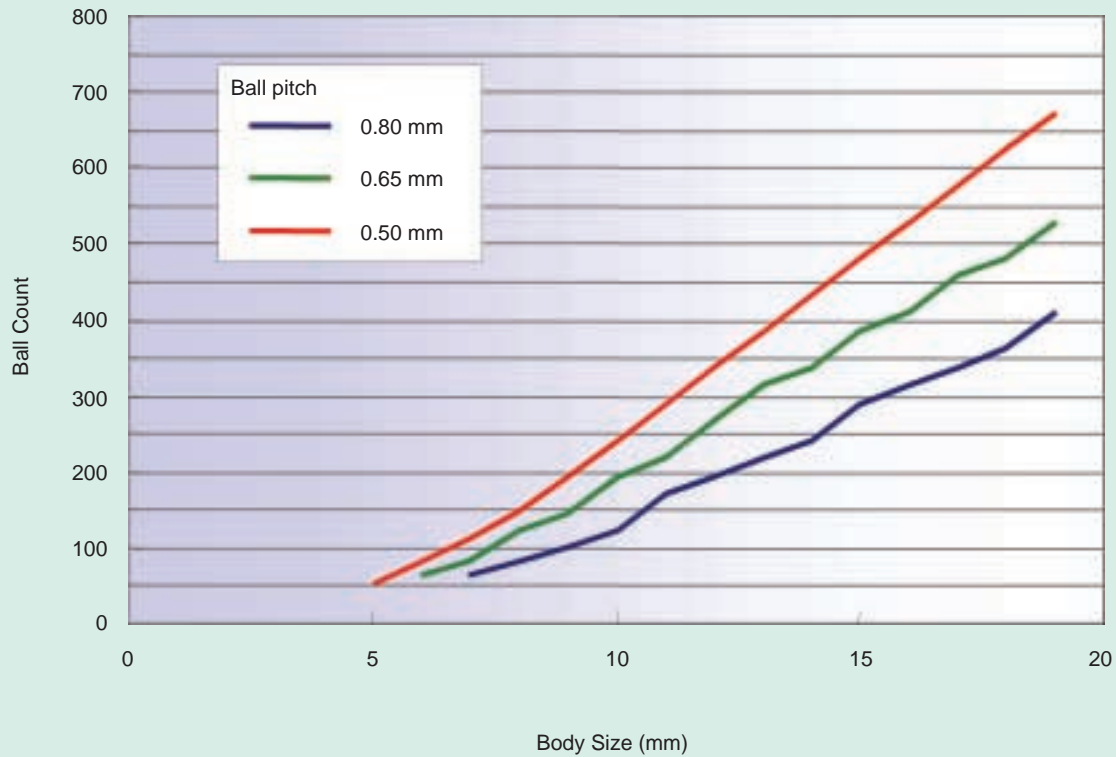


Package on Package



Package Body Sizes vs. Ball Counts

FBGA Standard Offerings



Body Size (mm)	0.80 mm	0.65 mm	0.50 mm
5 × 5	—	—	52
6 × 6	—	64	80
7 × 7	64	81	112
8 × 8	81	121	148
9 × 9	100	144	192
10 × 10	121	192	240
11 × 11	168	216	288
12 × 12	192	264	336
13 × 13	216	312	384
14 × 14	240	336	432
15 × 15	288	384	480
16 × 16	312	408	528
17 × 17	336	456	576
18 × 18	360	480	624

Windows Media is a trademark or registered trademark of Microsoft Corporation in the United States and/or other countries.

ARM7 and ARM9 are registered trademarks of ARM Ltd.

FCRAM and Fast Cycle RAM are trademarks of Fujitsu Limited, Japan.

**Toshiba America
Electronic Components, Inc.**

Headquarters-Irvine, CA
9775 Toledo Way, Irvine, CA 92618, U.S.A.
Tel: (949)455-2000 Fax: (949)859-3963

Boulder, CO (Denver)
3100 Araphahoe #500,
Boulder, CO 80303, U.S.A.
Tel: (303)442-3801 Fax: (303)442-7216

Deerfield, IL (Chicago)
One Pkwy., North, #500, Deerfield,
IL 60015-2547, U.S.A.
Tel: (847)945-1500 Fax: (847)945-1044

Duluth, GA (Atlanta)
3700 Crestwood Pkwy, #160,
Duluth, GA 30096, U.S.A.
Tel: (770)931-3363 Fax: (770)931-7602

Beaverton/Portland, OR
8323 SW Cirrus Drive, Beaverton,
OR 97008, U.S.A.
Tel: (503)466-3721 Fax: (503)629-0827

Raleigh, NC
3120 Highwoods Blvd., #108, Raleigh,
NC 27604, U.S.A.
Tel: (919)859-2800 Fax: (919)859-2898

Richardson, TX (Dallas)
777 East Campbell Rd., #650, Richardson,
TX 75081, U.S.A.
Tel: (972)480-0470 Fax: (972)235-4114

San Jose Engineering Center, CA
1060 Rincon Circle, San Jose, CA 95131, U.S.A.
Tel: (408)526-2400 Fax: (408)526-8910

Wakefield, MA (Boston)
401 Edgewater Place, #360, Wakefield,
MA 01880-6229, U.S.A.
Tel: (781)224-0074 Fax: (781)224-1095

Toshiba do Brasil, S.A.

Electronics Component Div.
Rua Afonso Celso 55213 andar,
Vila Mariana CEP 04119-002, São Paulo, Brasil
Tel: (011)5576-6619 Fax: (011)5576-6607

Toshiba India Private Ltd.
6F DR. Gopal Das Bhawan 28,
Barakhamba Road, New Delhi, 110001, India
Tel: (011)2371-4601 Fax: (011)2371-4603

Toshiba Electronics Europe GmbH

Düsseldorf Head Office
Hansaallee 181, D-40549 Düsseldorf,
Germany
Tel: (0211)5296-0 Fax: (0211)5296-400

München Office
Büro München Hofmannstrasse 52,
D-81379, München, Germany
Tel: (089)748595-0 Fax: (089)748595-42

France Branch
Les Jardins du Golf 6 rue de Rome 93561,
Rosny-Sous-Bois, Cedex, France
Tel: (1)48-12-48-12 Fax: (1)48-94-51-15

Italy Branch
Centro Direzionale Colleoni,
Palazzo Perseo 3,
I-20041 Agrate Brianza, (Milan), Italy
Tel: (039)68701 Fax: (039)6870205

Spain Branch
Parque Empresarial, San Fernando, Edificio Europa,
1ª Planta, E-28631 Madrid, Spain
Tel: (91)660-6798 Fax: (91)660-6799

U.K. Branch
Riverside Way, Camberley Surrey,
GU15 3YA, U.K.
Tel: (01276)69-4600 Fax: (01276)69-4800

Sweden Branch
Gustavslundsvägen 18, 5th Floor,
S-167 15 Bromma, Sweden
Tel: (08)704-0900 Fax: (08)80-8459

**Toshiba Electronics Asia
(Singapore) Pte. Ltd.**

Singapore Head Office
438B Alexandra Road, #06-08/12 Alexandra
Technopark, Singapore 119968
Tel: (6278)5252 Fax: (6271)5155

**Toshiba Electronics Service
(Thailand) Co., Ltd.**
135 Moo 5, Bangkadi Industrial Park, Tivanon Road,
Pathumthani, 12000, Thailand
Tel: (02)501-1635 Fax: (02)501-1638

**Toshiba Electronics Trading
(Malaysia) Sdn. Bhd.**

Kuala Lumpur Head Office
Suite W1203, Wisma Consplant, No.2,
Jalan SS 16/4, Subang Jaya, 47500 Petaling Jaya,
Selangor Darul Ehsan, Malaysia
Tel: (03)5631-6311 Fax: (03)5631-6307

Penang Office
Suite 13-1, 13th Floor, Menara Penang Garden,
42-A, Jalan Sultan Ahmad Shah,
10050 Penang, Malaysia
Tel: (04)226-8523 Fax: (04)226-8515

Toshiba Electronics Philippines, Inc.
26th Floor, Citibank Tower, Valero Street, Makati,
Manila, Philippines
Tel: (02)750-5510 Fax: (02)750-5511

Toshiba Electronics Asia, Ltd.

Hong Kong Head Office
Level 11, Tower 2, Grand Century
Place, No.193, Prince Edward Road West,
Mongkok, Kowloon, Hong Kong
Tel: 2375-6111 Fax: 2375-0969

Beijing Office
Room 714, Beijing Fortune Building,
No.5 Dong San Huan Bei-Lu, Chao Yang District,
Beijing, 100004, China
Tel: (010)6590-8796 Fax: (010)6590-8791

Chengdu Office
Suite 403A, Holiday Inn Crown Plaza 31, Zongfu Street,
Chengdu, 610016, Sichuan, China
Tel: (028)675-1773 Fax: (028)675-1065

Qingdao Office
Room B707, Full Hope Plaza,
12 Hong Kong Central Road, Qingdao,
Shandong, 266071, China
Tel: (0532)502-8105 Fax: (0532)502-8109

Toshiba Electronics Shenzhen Co., Ltd.
Room 2601-2609, 2616, Office Tower Shun Hing Square,
Di Wang Commercial Center, 5002 Shennan Road East,
Shenzhen, 518008, China
Tel: (0755)2583-0827 Fax: (0755)8246-1581

Toshiba Electronics Korea Corporation

Seoul Head Office
891, Sejong Securities Bldg. 20F, Daechi-dong,
Gangnam-gu, Seoul, 135-738, Korea
Tel: (02)3484-4334 Fax: (02)3484-4302

Gumi Office
6F, Goodmorning Securities Building,
56 Songjung-dong, Gumi-shi,
Kyeongbuk, 730-090, Korea
Tel: (054)456-7613 Fax: (054)456-7617

Toshiba Electronics (Shanghai) Co., Ltd.
11F, HSBC Tower, 101
Yin Cheng East Road, Pudong New Area, Shanghai,
200120, China
Tel: (021)6841-0666 Fax: (021)6841-5002

Hangzhou Office
9F Zhejiang San Rui Bldg. No. 36 QingChun Road,
Hangzhou 310004, China
Tel: (0571)8704-0255 Fax: (0571)8704-0200

Tsurong Xiamen Xiangyu Trading Co., Ltd.
14G, International Bank BLDG., No.8 Lujiang Road,
Xiamen, 361001, China
Tel: (0592)226-1398 Fax: (0592)226-1399

Toshiba Electronics Taiwan Corporation

Taipei Head Office
17F, Union Enterprise Plaza Building, 109
Min Sheng East Road, Section 3, Taipei,
105, Taiwan
Tel: (02)2514-9988 Fax: (02)2514-7892

Kaohsiung Office
16F-A, Chung-Cheng Building, 2, Chung-Cheng 3Road,
Kaohsiung, 800, Taiwan
Tel: (07)237-0826 Fax: (07)236-0046

The information contained herein is subject to change without notice. 021023_D

The information contained herein is presented only as a guide for the applications of our products. No responsibility is assumed by TOSHIBA for any infringements of patents or other rights of the third parties which may result from its use. No license is granted by implication or otherwise under any patent or patent rights of TOSHIBA or others. 021023_C

TOSHIBA is continually working to improve the quality and reliability of its products. Nevertheless, semiconductor devices in general can malfunction or fail due to their inherent electrical sensitivity and vulnerability to physical stress. It is the responsibility of the buyer, when utilizing TOSHIBA products, to comply with the standards of safety in making a safe design for the entire system, and to avoid situations in which a malfunction or failure of such TOSHIBA products could cause loss of human life, bodily injury or damage to property. In developing your designs, please ensure that TOSHIBA products are used within specified operating ranges as set forth in the most recent TOSHIBA products specifications. Also, please keep in mind the precautions and conditions set forth in the "Handling Guide for Semiconductor Devices," or "TOSHIBA Semiconductor Reliability Handbook" etc. 021023_A

The Toshiba products listed in this document are intended for usage in general electronics applications (computer, personal equipment, office equipment, measuring equipment, industrial robotics, domestic appliances, etc.). These Toshiba products are neither intended nor warranted for usage in equipment that requires extraordinarily high quality and/or reliability or a malfunction or failure of which may cause loss of human life or bodily injury ("Unintended Usage"). Unintended Usage include atomic energy control instruments, airplane or spaceship instruments, transportation instruments, traffic signal instruments, combustion control instruments, medical instruments, all types of safety devices, etc. Unintended Usage of Toshiba products listed in this document shall be made at the customer's own risk. 021023_B

The products described in this document may include products subject to the foreign exchange and foreign trade laws. 021023_F

The products described in this document may contain components made in the United States and subject to export control of the U.S. authorities. Diversion contrary to the U.S. law is prohibited. 021023_H

TOSHIBA products should not be embedded to the downstream products which are prohibited to be produced and sold, under any law and regulations. 030519_Q

TOSHIBA**TOSHIBA CORPORATION**
Semiconductor CompanyWebsite: <http://www.semicon.toshiba.co.jp/eng>